

The Historical Herald

Bartlett Historical Society's newsletter

Volume 3 Issue 1

Celebrating our Historical Heritage

Spring 2009

To preserve and protect all documents and items of historic value concerning the history of Bartlett, N H

EST. 2005

The Journey of the Bartlett Historical Society

In the summer of 2005 a small group of individuals interested in collecting and preserving the history of our town gathered to create the articles of association and to adopt the following mission statement: ***to preserve and protect all documents and items of historic value concerning the history of the town of Bartlett, NH.*** With those two business items accomplished, the Bartlett Historical Society was founded.

In the fall of that year, the owners of a Bartlett bed and breakfast, the Chippanock Inn, hosted the first meeting of the Bartlett Historical Society. Members gathered and brought their collections of Bartlett historical memorabilia which filled three rooms at the inn. It was then that the first election of officers was held. The new Board created goals to encourage and embrace programs to promote genealogy research and family history, preserve the history of railroading, and provide for the mapping of the cemeteries. They also worked to develop the organizational "nuts and bolts" by networking with established societies to research and build policies and procedures to accessioning and de-accessioning of gifts, as well as to create a Constitution and By-Laws. During the first year, programs were presented by Peter Crane on the history of Livermore, Marty Engstrom on his years on Mt. Washington, and Ben English on railroading in Bartlett. The membership grew to 57.

The society was blessed in 2006 when Stoney Morrell of the Morrell Corporation offered the use of the chalet on the hill as an impermanent home with the provision that we assume the responsibility for the heat and electricity. The Society settled into its new home and began researching ways to finance the necessary equipment to catalog and archive its collections. The first grant was written to the Henney History fund for a fire-proof/water-proof file cabinet. A few "set-backs" were encountered during that year. The chalet was broken into and a donated computer was stolen. Then a furnace malfunction resulted in a room full of soot, requiring several days of cleaning. Our members participated in Bartlett Old Home Days in July, and during November and December of 2006, the oral history project entitled *Life, Legends and Lore - Village Voices* became a reality. Membership increased to 110.

In 2007 the society proudly announced that the theme of the year would be ***all things history*** and invited everyone to visit its new web site at www.bartletthistory.org. The website was created after a great deal of research by member Kathi McGraw to insure that it would be able to accommodate multiple users, provide membership and contact forms, be keyword searchable, user friendly, and affordable. It is an evolving project which now features photos, sounds, and links to other web-sites. The society continued its grant writing, and in 2007, received funds from the Pequawket Foundation for the Past Perfect software program and a laptop computer; from the Henney History Fund for a multi-function printer/scanner/copier; and, from NH Electric Cooperative for equipment to support the Life, Legends and Lore project. The infrastructure of the society was strengthened by addressing regulatory compliance, creating a new file system, and reinforcing and expanding the policies and procedures manual. The following programs, projects and presentations highlighted our theme: the Grand Hotels of the White Mountains; a tour of the historic Limmer property (aka Intervale Playground and Harmony Acres); a tour of the Sut and Margaret Marshall's horse drawn wagon collection; and, the New Hampshire Humanities Council programs *Songs of Old New Hampshire* and *Witches, Pop Culture and the Past*. We presented a float in the Bartlett July 4th parade, created a BHS newsletter with its popular feature, *100 Years Ago in Bartlett—News from the Villages*, and presented Genealogy Research workshops. We continued with our oral history project, and established the *cemetery mapping and indexing project* and *The History of...* project whereby members are researching various aspects of our history. Our membership grew to more than 150 in 2007.

Last year our energy was focused on our theme of ***celebrating our historical heritage***. We continued to work on, and to expand our on-going projects. We hosted programs on the White Mountain Art Heritage, The Legend and Lore of Diana's Bath, as well as a program on the White Mountain National Forest. Much of our energy and activity during 2008 was devoted to the school reunion which we hosted for three days in August.

Continued on page 2

As you may have assumed by now, we are an organization with an extremely high activity level. Our membership has grown from the founding members to our current level of 188. The founding members of our society were Leslie Mallett, Bartlett town clerk; Bert George, current BHS vice-president; Norman Head, current BHS president; John Murphy, Bartlett native and local historian; and, Jean Garland who served as our town librarian for 55 years. During that time Jean assembled a sizeable collection of Bartlett historical memorabilia. The library, under her leadership, and the board of trustees commissioned Aileen Carroll to write two books on the history of Bartlett. Recently, Jean was named as New Hampshire Librarian of the Year by the New Hampshire Library Trustees Association.

Society goals for the future are to increase our membership; encourage and recruit member involvement in our on-going projects and programs, coordinate with other societies and organizations to present joint programs and events for the entire valley, present more of the popular Humanities Council programs and schedule history related field trips. We also hope to work with the schools to create history related youth programs and, of course, we will be planning and searching for a permanent home. The long term future of our organization is limited only by the involvement and the vision of its members. We invite you and your family to join us on our journey as we explore, celebrate and preserve the history of our town.

Bartlett Historical Society Member Information

P.O. BOX 514, BARTLETT, NH 03812; www.bartletthistory.org; email: info@bartletthistory.org
 Phone: 603-383-4115 (please leave a message)

2009 OFFICERS:

Norman Head, President	ph: 603-986-6278	email: president@bartletthistory.org
Bert George, Vice President	ph: 603-374-2328	email: vicepresident@bartletthistory.org
Marcia Dolley, Secretary	ph: 603-367-9278	email: secretary@bartletthistory.org
Hannalore Chandler, Treasurer	ph: 603-383-4297	email: treasurer@bartletthistory.org

BARTLETT HISTORICAL SOCIETY MEMBERSHIP FORM

Please complete the information below and include this form with your dues payment to PO Box 514, Bartlett NH, 03812

Please circle one:

2009 New

2009 Renewal

Please check one:

- \$ 10 Individual Membership
- \$ 15 Family Membership
- \$ 50 Patron Membership
- \$100 Business Membership
- I wish to make the following donation in addition to my dues: \$ _____
- I would prefer to receive the quarterly newsletter by traditional mail.
- I would prefer to receive the quarterly newsletter by e-mail.

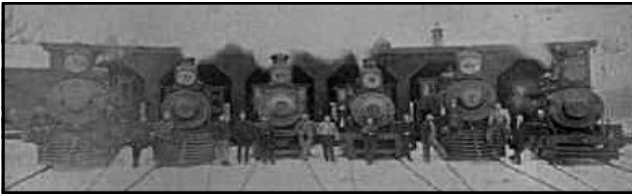
NAME(S): _____

MAILING ADDRESS: _____

TOWN: _____ STATE/ZIP: _____

*E-MAIL: _____ PHONE: _____

Please make your checks payable to Bartlett Historical Society.
 Donations for special projects or toward our annual budget are always appreciated.



The Historical Impact and Significances of the Railroads in Bartlett

By Scotty Mallet, Railroad Historian

Railroading in Bartlett holds a rich and deep history; it above all put Bartlett on the map, helping it grow fiscally, physically and historically. The first railroad to reach Bartlett was the Portland and Ogdensburg, crossing into Bartlett in 1872 and reaching the village of Bartlett in 1873. A large 2 storied station was built, along with a freight house, car houses, section-men's buildings, signal maintainers buildings, a water tower and a 6 bay engine house with a turntable. The station was replaced four times, each time it had been destroyed by fire. The first station was lost on July 13, 1893 in the town fire. The station was rebuilt and was rewarded a singular distinction by the Railroad Commissioners of the State of New Hampshire, as it being the most attractive and having the best interior layout in the *INTIRE* state. The roundhouse maintained a fleet of locomotives to help heavy freights up the steep grades through Crawford Notch. The P&O was leased to the Maine Central Railroad in 1888. Farmers and local businesses shipped goods and produce from the freight agency in Bartlett. G.K. Howard had a siding that held a boxcar for this general store on Albany Avenue, and the famous Kearsarge Peg mill was once connected to the railroad by a spur to its yard, shipping product out from there to places unknown. Passenger travel bolstered the village's economy as people needed things to do and places to shop, sleep, and dine. In the village alone the P&O and later

he Maine Central employed nearly 100 people. The station and roundhouse was in operation 24 hours.

Three logging railroads also came on the scene, these railroads did not last long but they provided jobs and brought in revenue for the town. The Barlett and Albany RR (1887-1893) operated 13 miles of track and served the Bartlett Land and Lumber Company sawmill in the Village. The East Branch RR (1916-1920) operated in Glen (or Beal's) pit, across route 302 and through the woods from where Hartmann Model RR Museum is located now, bringing out logs over their 13 miles of track that extended north to Black Mountain. Cars loaded with logs were stored at the siding in Glen pit. The Rocky Branch RR (1908-1913) operated 11-½ miles of track, following the Rocky Branch of the Saco River. Logs were brought down to their staging area. That staging area is where Grant's Supermarket now sits. Once

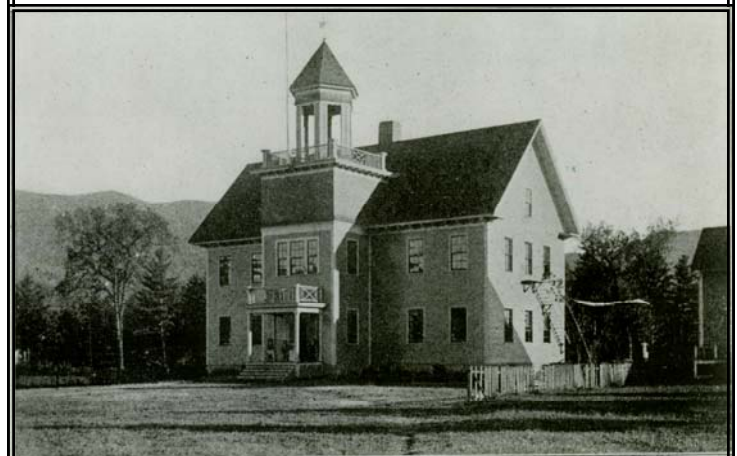
the cars were ready, the Maine Central would move them and the cars for the East Branch, to their interchange point with the Boston and Maine at Intervale. This combined labor force numbered over 100. There are only scant traces of these lines now, they are all gone.

Time has passed. The last regularly scheduled passenger train on the Maine Central Railroad was in 1958. The roundhouse still stands today; its turntable was removed in 1913. It was sold to the State of N. H. in 1958. They used it as a sand and salt depot until the early 1980's. Freight service continued to dwindle and on September 3, 1983 the last regularly scheduled freight ran over the line, closing out a century of service through Bartlett. The freight house was regularly used until early 1984, it still stands today.



Bartlett School 1909

Images From the Villages



VILLAGE SCHOOL BUILDING

Village School Building ca. 1908

2009 BHS Programs and Presentations

On February 17, 2009, at the Glen Fire Station, the Bartlett Historical Society will team up with the Bartlett Firefighters' Association for dinner and a program. The evening will begin with dinner prepared by the members of the Glen Fire Department. followed by a slide show presentation by BHS member, Ben English, entitled **"Railroading in Bartlett and Vicinity 1972 Forward."**

On April 21, 2009 the Society will team up with our friends at the Bartlett Union Congregational Church in Bartlett Village, for another dinner program. Dinner will be served at 6:00 will be followed by a New Hampshire Humanities Council program entitled **"New Hampshire Cemeteries and Gravestones."** Presenter, Glen A. Knoblock, explains how to read these "stone pages" that give insight into the vast genealogical book of New Hampshire. Rubbings, photographs, and slides illustrate the rich variety of gravestones to be found in our neighborhoods, but they also tell long-forgotten stories of the Great Awakening, the throat distemper epidemic, and the American Revolution. To assist our hosts at the church with their planning, if you will be joining us, please complete the reservation form below.

On June 16, 2009 BHS member and valley native, John Cannell will host a Q&A session on **growing up in Glen in the 30's.**

On August 18, 2009 our program will feature Maria Schmidt Blaine from the New Hampshire Humanities Council, with her rendition of **"A Woman That Keeps Good Order; Women, Tavern Keeping, and Public Approval,"**

On October 20, 2009 we wrap up our program calendar for 2009 with a dinner and talk/slide show presentation by Peter Crane on **"The History of Livermore."**

All BHS programs and presentations are free and open to the public. A fee will charged for the dinners.

2009 BHS On-going Projects

Life, Legends & Lore - Village Voices: The Society's oral history project began in 2006 in order to record the remembrances and recollections of those who lived in the villages of Bartlett. Through the end of 2008 we have recorded 29 individuals who grew up in the villages of Bartlett. This is an on-going project which will continue until we have exhausted the supply of individuals willing to participate.

Cemetery Mapping and Indexing: Another BHS on-going project where members are participating by mapping the cemeteries and recording the stones therein. This project is very time consuming, but its importance in recording the history of Bartlett cannot be over-stated.

Bartlett Families- their history and genealogy: Using the census records from 1790-1930, family genealogies, gravestone inscriptions and Bartlett vital records, we are recording the history of Bartlett through the lives and activities of her families.

Military Service of the Men & Women of Bartlett: Members are celebrating our military heritage by collecting information on the military service of the men and women of Bartlett who have served our country.

Our June newsletter will have additional details on these

2009 BHS Fundraising Events

The Society has registered with **Shaw's Supermarkets** (and **Star Markets in Massachusetts**) for their Receipt Rewards Program, now known as **Neighborhood Rewards** for non-profit organizations. This program is in transition and is connected to your Shaw's reward card. Our Neighborhood Rewards ID# is 49001019937. More details to follow in the June newsletter

Continuing with the theme of the year "Images from the Villages," the society will once again be selling the **Historic Bartlett Schoolhouses Afghan**. An image and order form can be found on page 5 .

The Bartlett Historical Society Partnership Program—Tuesday, April 21, 2009 at the Congregational Church in Bartlett Village -6:00 pm dinner followed at 7:00 by the New Hampshire Humanities Council program, *New Hampshire Cemeteries and Gravestones* with Glen A. Knoblock

Dinner Reservations:

Please reserve the following dinners either baked chicken or meatloaf. Dinners include potato, vegetable, rolls, dessert and coffee. Dinner is \$10.00 p/p. Please indicate below how many of each you wish to reserve

___ Baked Chicken
___ Meatloaf

In the name of: _____ **ph or email:** _____
My check in the amount of \$ _____ **is enclosed.**

**Please clip this completed form and mail along with your check by April 1st to :
Bartlett Historical Society, PO Box 514, Bartlett, NH 03812**

Celebrating our Heritage through Bartlett School History

As early as 1811 three school districts were established in Bartlett. The town was redistricted periodically, and, according to the town report for the fiscal year ending February 27, 1897, the schools in the districts appear to be identified as follows:

No. 1 - Lower Bartlett; No. 2 - Glen; No. 3 - Garland Ridge
No. 4 - Kearsarge; No. 5 - Hill Town; No. 6 - Goodrich Falls

We assume that each of the district school houses were of the one-room variety in 1897. Four of the one-room schools houses in these districts are depicted on the afghan; Lower Bartlett, Glen, Garland Ridge and Goodrich Falls.

Special school district No. 5 was the Bartlett Village school, and it housed the grammar school, intermediate school and primary school in one building.

No. 1 -Lower Bartlett

The Intervale (Lower Bartlett) school, one of two of the one-room schools still in existence, is now a private residence. It is located on 16A in the Intervale area of Bartlett. That school was replaced with the Intervale Grammar School, built in 1938. This school educated the children of Intervale, Glen and Goodrich Falls until its closing in the late 1950's. That building, located in the lower left corner of the afghan, still exists and now houses the Bartlett Town Hall.

No. 2 - Glen

The Glen School was located on Route 302 approximately halfway between the Massa Shussers Ski Club and Jericho Road. After its closing, it was moved east and is now the core of the Margarita Grill Restaurant building. It appears on the afghan thanks to Vivian Robinson Eastman and Isabelle Dana Crouse who described the building as they recalled it when they attended school there.

No. 3 - Garland Ridge

The Garland Ridge School was located along Stoney Brook, between the Attitash Ski Area and "Rogers Crossing," east of Bartlett Village. Thanks to Jean Garland, who provided us with an old photograph from the Library files, we were able to sketch a likeness of that one-room school house for the afghan.

No. 4 - Kearsarge

The Kearsarge School was located on what is now known as Hurricane Mountain Road approximately half way between Mt. Surprise Road and Timberline Road. In the late 1800's the building is said to have been moved across the street into Conway, and Bartlett paid Conway tuition for the Kearsarge children to attend school there. We believe that this arrangement was continued until the 1930's. A *time-worn* photograph of this school is located in the history files at the Bartlett Library.

No. 5 -Hill Town

The Hill Town District is located on West Side Road approximately two miles east of the Route 302/ West Side Road intersection. All that remains of that settlement is an old graveyard and the evidence of a few of the homes. Descendants of the early settlers of that area still live in Bartlett. According to the 1897 report \$15.00 was expended to move the old school and \$331.96 for labor and materials was expended to build a new school in the Hill District. Unfortunately, we were unable to locate a photo of either of these buildings for the 2008 afghan.

No. 6 - Goodrich Falls

The Goodrich Falls school was located on old Route 16 just south of the home formerly owned by the McGraw family. We now have a pretty good idea of school days at Goodrich Falls thanks to Marion Morton Randall, quite possibly the last known person, now living, to attend that school.

Special District No. 5 - Bartlett Village

Bartlett Village Grammar School (located in the upper right-hand corner of the afghan) was built ca. 1880, renovated in 1896 and burned in February 1931. The building was replaced with another in 1932. That building, titled Bartlett Grammar/High School is located in the lower right corner on the afghan.

Bartlett High school was built ca. 1922-23, and is located in the upper left corner of the afghan and called Bartlett High/Grammar School. It served in that capacity until ca. 1949 when it became the Grammar school. The high school moved into the Grammar school building and was located there until its closing in 1958.

The school in the center medallion represents the present school facility.



Postcard photo of Glen courtesy of Jean Ainsworth



Postcard photo of Manran Farm, Summer of '08 courtesy of Norman Head

100 YEARS AGO IN BARTLETT

NEWS ITEMS FROM THE REPORTER

The history of Bartlett as told through the lives and activities of the families of the villages of Upper Bartlett or Bartlett Village, Center Bartlett or Glen Station and Lower Bartlett or Intervale.

Bartlett - Jan 1909

Harry Field was called here from California by the serious illness of his mother.

Mrs. Lula Wilson and Miss Edith Mayberry have returned from Fairview, Intervale.

Andy Harriman is working at Glen.

J. H. Mead is out of the store on the sick list.

Mrs. Omar Jones went to Jackson Saturday, to attend the funeral of Miss Louise Davis, who died very suddenly in Buffalo hospital.

Basket ball team has been organized and practice every Thursday night.

In the calmness of Saturday evening at 8:20, Jan 9, the messenger of death called at the home of Mr. and Mrs. Geo. Lameiux and called from them their little daughter Blanche, aged 4 years and 3 months, who had been sick nearly a week with pneumonia. From the first Dr. Mullen gave very little hope of her recovery. Her death came with a great shock to her parents, who have the sympathy of the community. Her funeral was held at St. Joseph church, Jan. 12, Fr. LaCroix officiating. Interment in Westbrook, Maine.

Miss Laura LaPointe is very sick at her sister's Mrs. Geo. Lemeiux.

Mrs. Grace Ryan is working for Mrs. Geo. Thompson.

Mrs. R. W. Mason and Mrs. R. Morse were in Portland Monday.

Miss Gladys Foster is in North Conway.

Mrs. Mary George is on the sick list.

Our correspondent complains of lack of co-operation of the citizens of Bartlett regarding items of interest. We know it is mostly the outcome of negligence, and it is desired that the good people of this place will assist all they can by sending their news to Mrs. L. R. Cox. -[Ed.

Glen—Jan 1909

Mr. and Mrs. James Mead were called by telegram on Tuesday of last week to Plattsburg, N.Y. on account of the critical illness of Mrs. Mead's sister, Mrs. Charlotte Aldridge, who died on Friday morning.

Clarence Mead has sold his residence at Hillsboro, N. H., and will move his family to Jackson, N. H.

Mrs. J. F. Robinson spent Monday afternoon with Mrs. Frank Cannell.

The officers of Glen Grange were installed last Thursday night by Mrs. J. L. Pendexter, assisted by her husband, J. L. Pendexter. Glen Grange was very much pleased with the able manner in which she did her work. After the installation refreshments were served and a social hour enjoyed in

playing games. We think Glen Grange is in good working order for this year and hope to see many new members before the year is out.

Clarence Mead drove through with his team from Hillsboro, starting on Thursday and arriving at his father's Joseph Mead, on Sunday morning.

Rev. and Mrs. Gilkey left on Monday morning for California and expect to remain there until about the first of March.

Mrs. Dan Merry visited Bartlett on Monday.

Mrs. Martha Mead spent last week with Mrs. Elizabeth Morton at Goodrich Falls.

George Meserve of Jackson, was a guest at Joseph Mead's on Monday.

Mr. and Mrs. Fred Robinson are spending this week at Haverhill, Mass.

John Chandler, the two year old son of Mr. and Mrs. Walter Chandler, has been very sick with a throat trouble

Intervale, N. H. - Jan 1909

The Christmas cantata, "Santa Claus' Delights," which was held at the church on Christmas Eve, was quite a success, the children taking their parts well. John Dinsmore made a fine Santa Claus and much credit is due Mrs. F. A. Tasker for its success for the beauty of the decorations.

Fred Burroughs and family have moved into their new house across the river.

Mrs. Emma Dinsmore has returned from Milo. She brought her little niece, Gertrude Bickler, who will live with her for the future.

The red and blue contest closed Dec. 31, resulting in a victory for the blues, therefore, they will be entertained by the reds at the Fairview the evening of January 12.

Mrs. Nelson Thompson is very sick. Dr. Shedd is attending her.

Mrs. Gerry, who has been ill, is now able to ride out.

Miss Helen Ward, who spent her Christmas vacation at home, returned to Lowell on Monday.

Mr. and Mrs. Parkman Drown are away on vacation.

Mr. and Mrs. J. L. Binford of Chatham, N. H., have been spending a week in town, stopping at Elmwood Inn and calling on their many friends.

Miss Mabel Rogers has returned to Boston where she is attending School.

W. H. Sanders, John Rogers and F. A. Dinsmore attended the Poultry Show in Portland, last week.

W. D. Tasker and son have Sandy Miller and Ed Willey, with eight horses, at West Ossipee hauling lumber from Kennett and Mudgett's hill.

Mrs. I. N. Thompson is confined to the house with rheumatism.

BARTLETT HISTORICAL SOCIETY
PO BOX 514
BARTLETT, NH 03812

Friends and Neighbors,

This newsletter is being sent to all property owners in Bartlett. Inside we are taking a “walk down memory lane” as we recall our journey thus far and introduce our extraordinary organization. Our 2009 calendar of programs and presentations as well as our ongoing projects and fundraising events can be found on page 4. On page 3 you may read of “The Historical Impact and Significances of the Railroads in Bartlett. On page 5 is an order form for our “Historic Bartlett Schoolhouses” afghan, and on page 6 is a very brief history of each of the images on the afghan. On page 7 you will read the latest news of the Glen Grange and the Intervale church Christmas cantata in our *100 Years ago in Bartlett*, the history of Bartlett as told through the lives and activities of the families of the villages of Upper Bartlett (aka Bartlett Village,) Center Bartlett or Glen Station (aka as Glen,) and Lower Bartlett (aka as Intervale.)

Our society is an infant among the New Hampshire Societies, however our activity level rivals that of our older brothers and sisters. In addition to our oral history project, our cemetery mapping and indexing project, and the Bartlett Families project, our members are supporting Bert George, Mike Kirk and George Howard as they celebrate our military heritage by compiling military and personal data on the men and women from Bartlett who have served our country. To date this committee has received member contributions which not only include the military records, but military medals, photos and family information. Member, Ben George, has created a great deal of interest on sports in Bartlett with his compilation entitled “Remembering Bartlett Baseball and Softball.” Member Scotty Mallett and others have formed the Bartlett Roundhouse Preservation Project. So many members are now taking a second look at their family collections, checking their attics, and donating their historic photos, family genealogical information and other historical matter to our collections. This year we will be partnering with organizations in Bartlett to present our programs.

Each year we plan our activities based around a theme for the year. This year our theme is *Images from the Villages* and we will be sharing photos and other images recalling life as it was in Bartlett. We have provided a preview featuring school photos ca. 1908 and 1909 which can be found on page 4 and other village images on page 6.

We invite our Bartlett friends and neighbors to join us on this incredible journey and become a member of our society. A membership form can be found on page 2.

The Board of Directors, on behalf of BHS members